

The Thing Shop
480-753-0684



Glove Box Door Installation Instructions

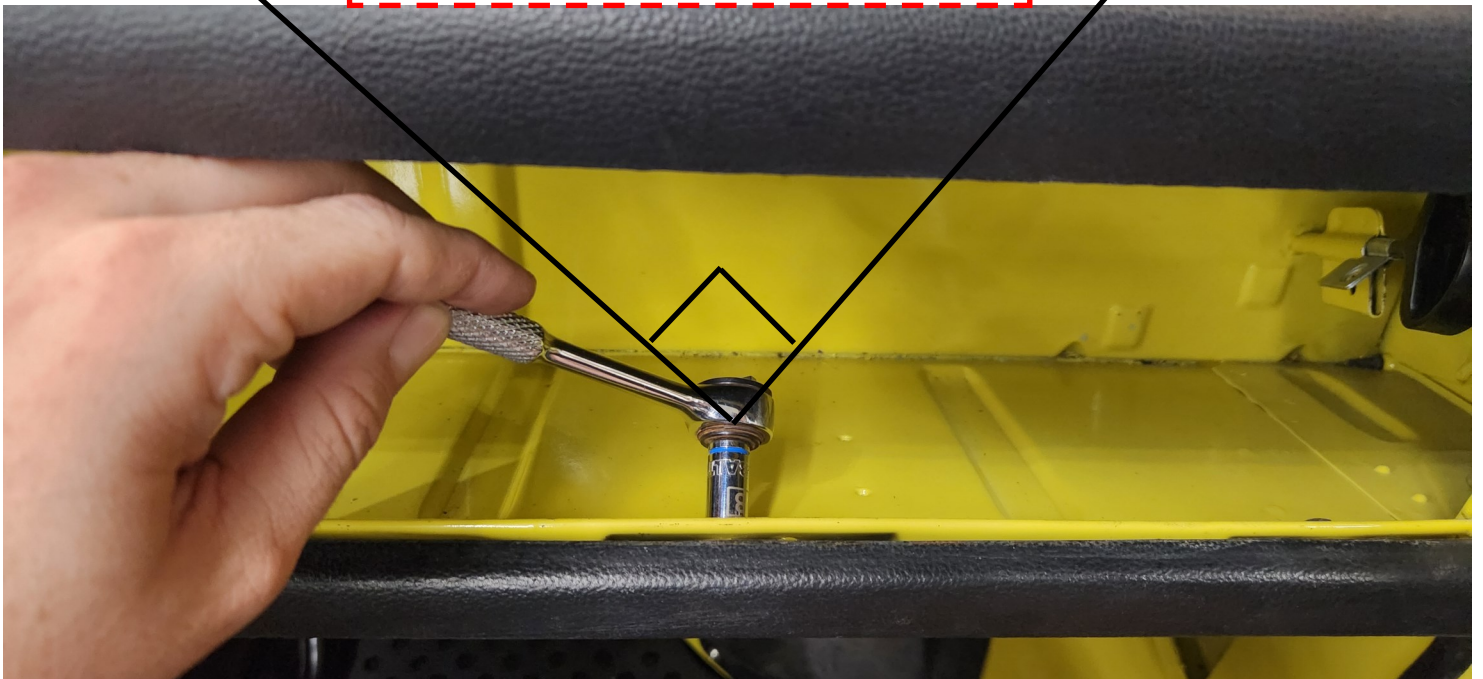
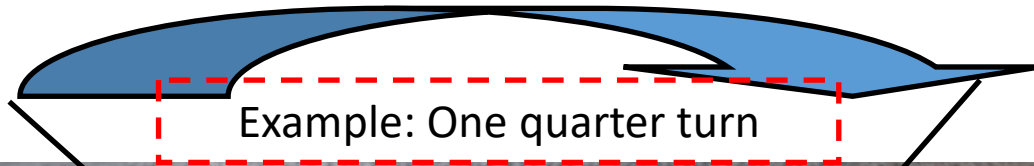


For a downloadable PDF of these instructions, scan the QR code on your mobile device or visit the product page description.

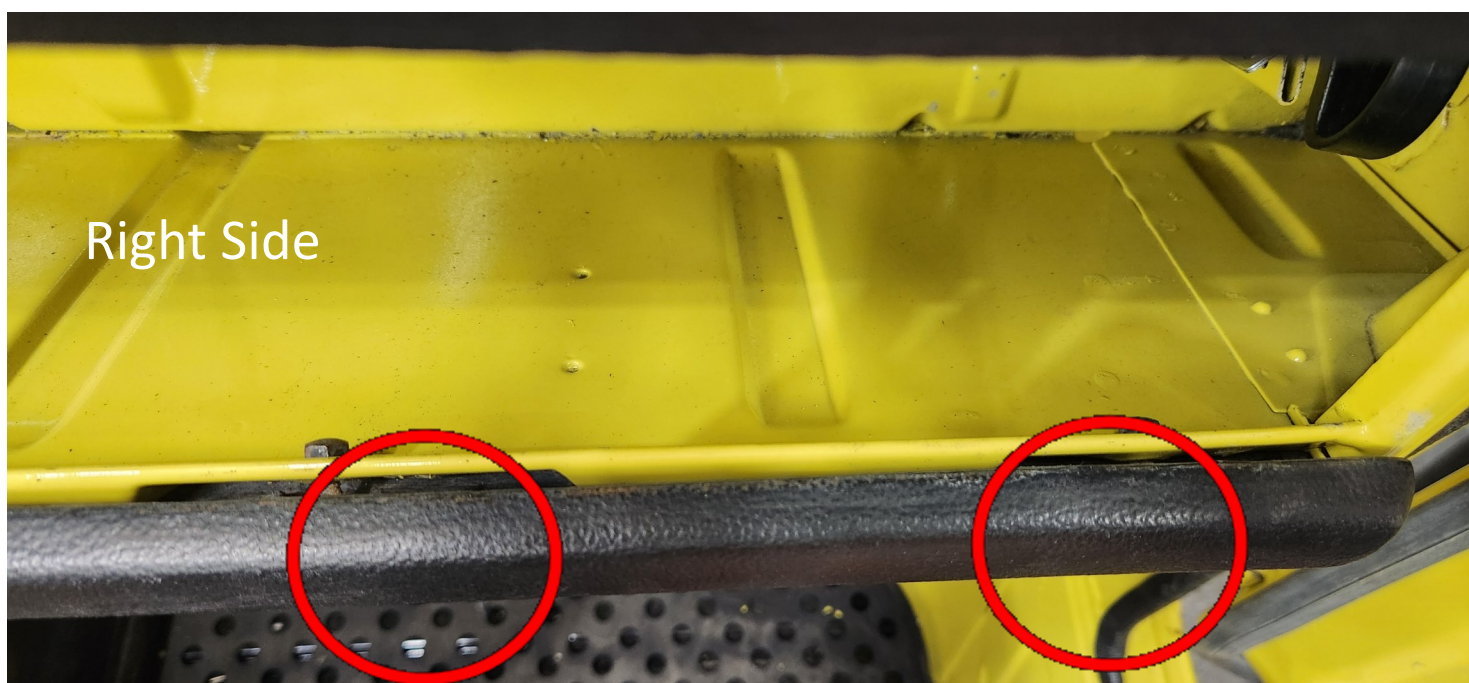
After your glove box door is painted, follow these installation instructions. If you have any questions, feel free to give us a call!



1. Using an 8mm socket, make 8-10 quarter turns to loosen 4 nuts holding the padded strip to the glove box. (DO NOT LOOSEN THE NUTS ALL THE WAY OFF!)



Note: There should now be a small gap between the glove box lip and the padded strip. This gap will be where the hinge tabs will be sandwiched together.



2. The padded strip should now be loose. Next insert each of the hinge tabs between the dash and the padded strip. Be careful to align glove box door with the edges of the glove box.



3. Lower the door so that the hinges are slightly above the padded strip.

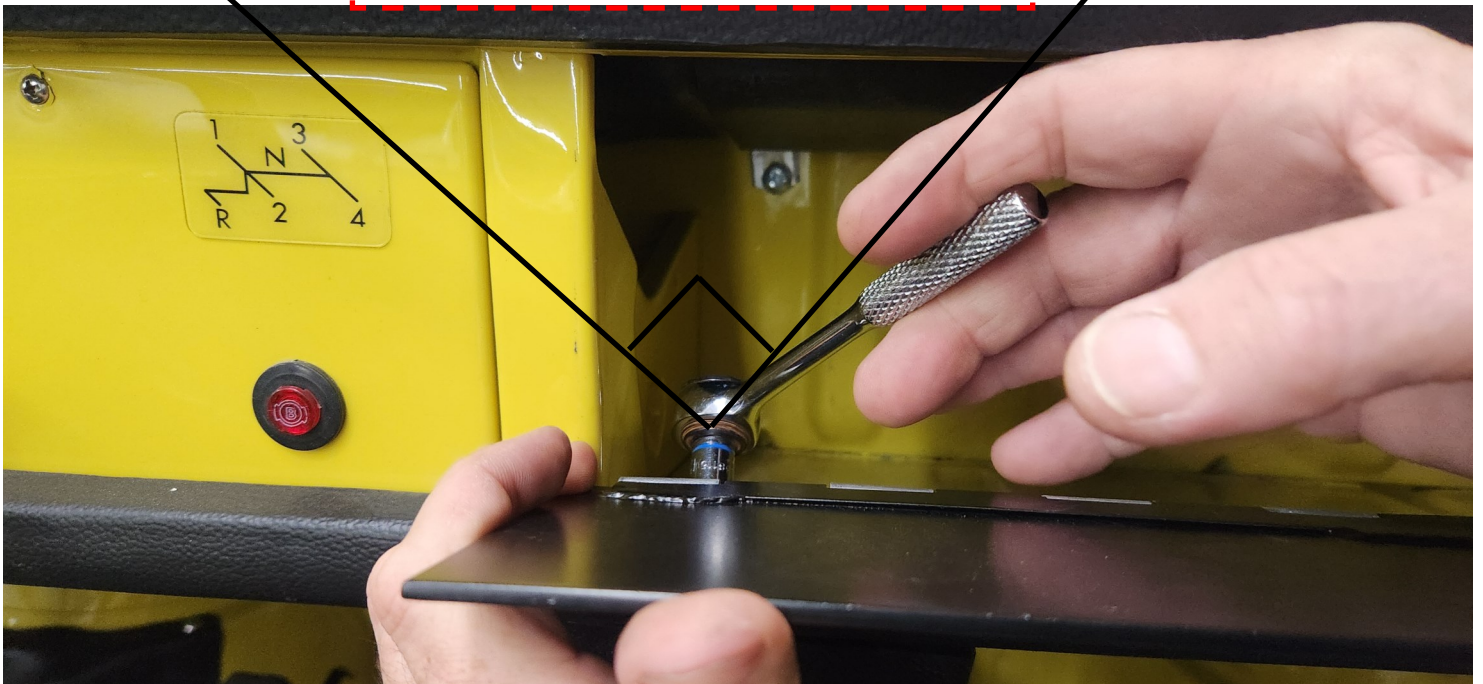


4. Tighten 4 nuts 4-6 quarter turns or as necessary.

DO NOT OVERTIGHTEN!

STUDS WILL BREAK IF OVER TIGHTENED!

Example: One quarter turn



5. Find the location of the glove box lock which is directly above the latch, then with the tool provided, slightly bend the inside lip out until the glove box door latches.



The metal should only be slightly bent out to reach the latch. It is recommended to only bend little by little until the glove box lock latches.



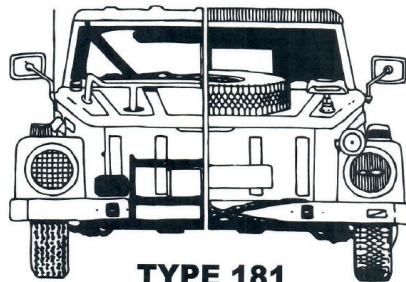
See photo for approximate shape of glove box door.



6. Latch and Enjoy!



THE THING SHOP



**TYPE 181
PARTS & ACCESSORIES**

Copyright © The Thing Shop 2024. Reproduction of this material is permitted only with explicit written permission from The Thing Shop.

Rev: GNO